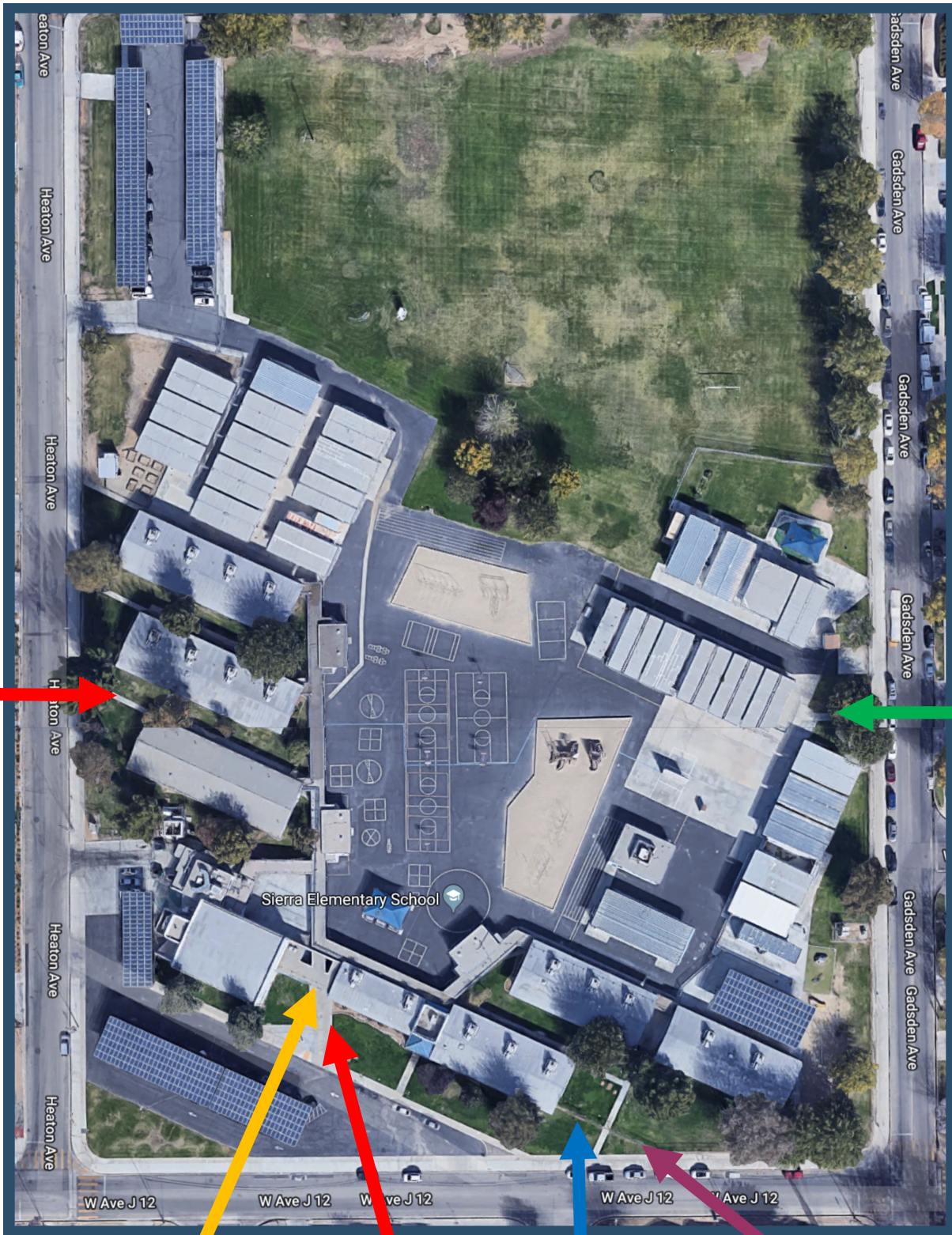


SIERRA ELEMENTARY SCHOOL

Dismissal Routes



Bus
Najera, Barton, & Trojahn
Dismissal Gate

4th & 5th Grade Dismissal Gate

1st Grade, 2nd Grade, & 3rd Grade
Dismissal Gate

Bus

Kinder Dismissal Gate
(Rojas, Penn, Holmes)

Kinder Dismissal Gate
(Quinn, Null)

SIERRA ELEMENTARY SCHOOL

Arrival & Dismissal Guidelines

REGULAR DAY		MINIMUM DAY	
TK/K - 5	7:50 a.m. – 2:33 p.m.	TK/K - 5	7:50 a.m. – 12:05 p.m.

Breakfast is served in the cafeteria from 7:10 a.m. – 7:40 a.m.

In order to ensure high levels of supervision and superior safety for our Sierra students, we ask that our Sierra families help us by adhering to the following arrival and dismissal guidelines:

Arrival:

- All 1st through 5th grade students will enter campus through the front gate, off of J-12 (between the office and cafeteria).
- Kindergarten students will enter through the gate at the corner of J-12 and Gadsden.
- Kindergarten students who are eating breakfast in the cafeteria may be walked to the front gate, where they will then be escorted by a member of our supervision team to the cafeteria.

Dismissal:

- **Please do not drive into the front parking lot during dismissal. Driveways will be blocked until 20 minutes after dismissal.**
- **Teachers will escort students to their grade level's assigned dismissal gate.**
- **All students must exit out of their grade level's assigned dismissal gate.**
- After exiting campus, older siblings may walk around the exterior of the campus to pick-up their younger siblings.
- Kindergarten students will be released out of two gates at the corner of J-12 and Gadsden.
 - Kindergarten students in rooms K-1 & K-2 will exit out of the gate closest to the corner of J-12 and Gadsden.
 - Kindergarten students in rooms K-3, K-4, & 33 will exit out of the second gate from the corner of J-12 and Gadsden.
 - Teachers will release kindergarten students directly to their parents/guardians.
- 1st grade, 2nd grade, and 3rd grade students will be released out of the front gate, off of J-12 (between the office & cafeteria).
- 1st grade students will be dismissed after the teacher has made eye contact with the parent/guardian.
- 4th & 5th grade students will be released out of the east gate, off of Gadsden.
- Students in Najera's, Barton's, & Trojahn's classes will be dismissed out of the gate off of Heaton. Special education transportation will also pick-up at this gate.
- General education transportation will pick-up students at the front of the school.

Thank you for helping us to keep our students safe!